



www.flitetest.com

# FT Tiny Trainer

## Recommended electronics:

- 2200kv 250 size motor
- 12 amp ESC minimum
- 500-1000 mAH 3s
- (2-4) 5 gram servos

## Throws:

- 16° deflection
- Expo 30%

## Weight Without Battery:

6.8 oz (193g)

## Recommended Prop:

5 x 3 prop minimum

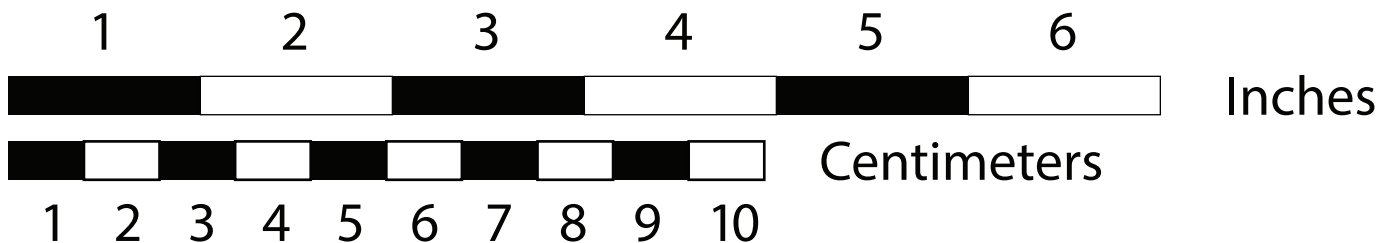
black = cut

red = score 50%

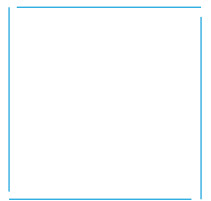
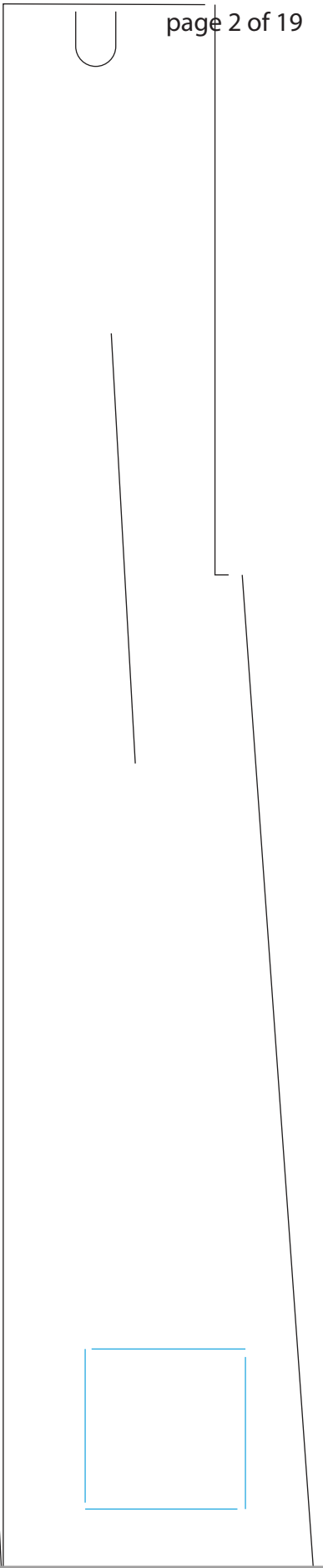
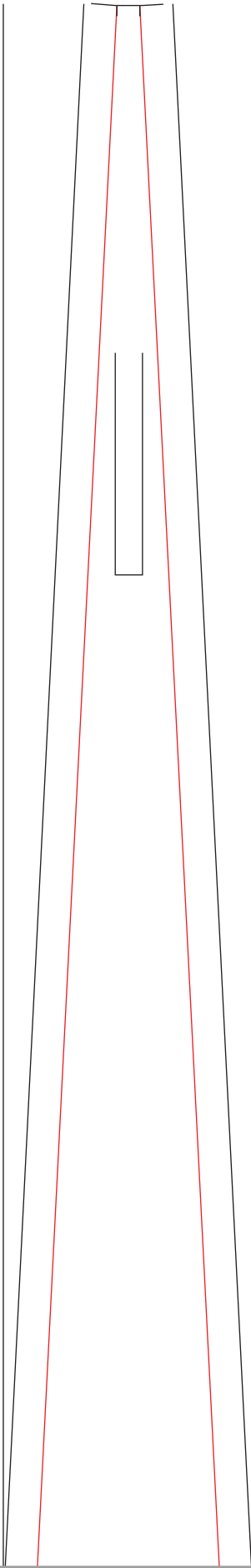
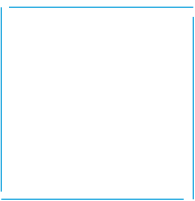
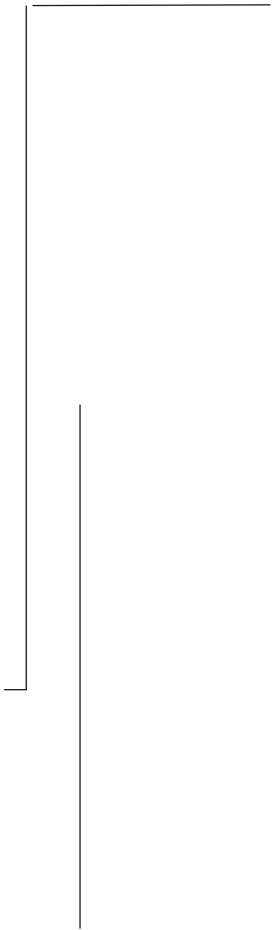
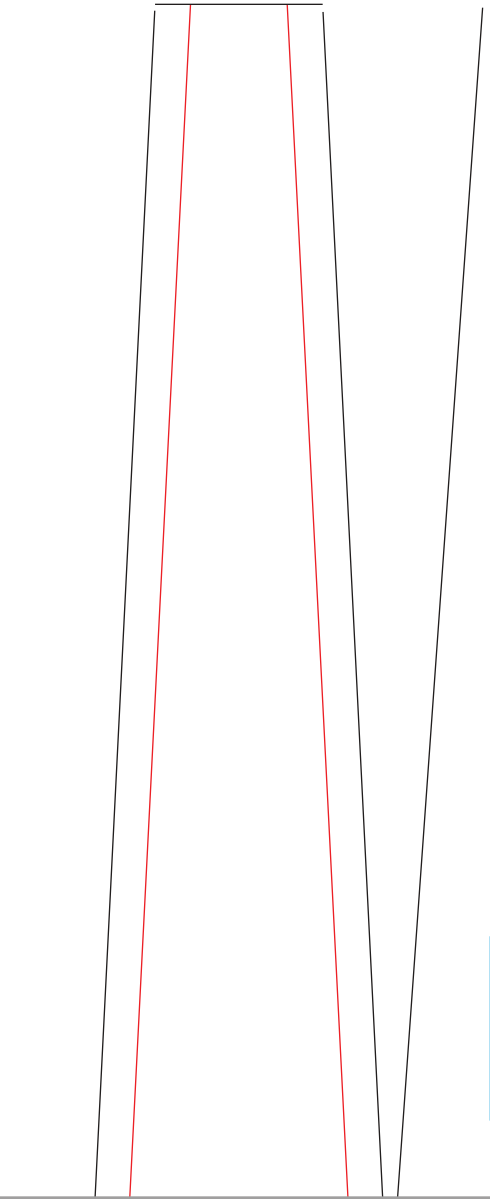
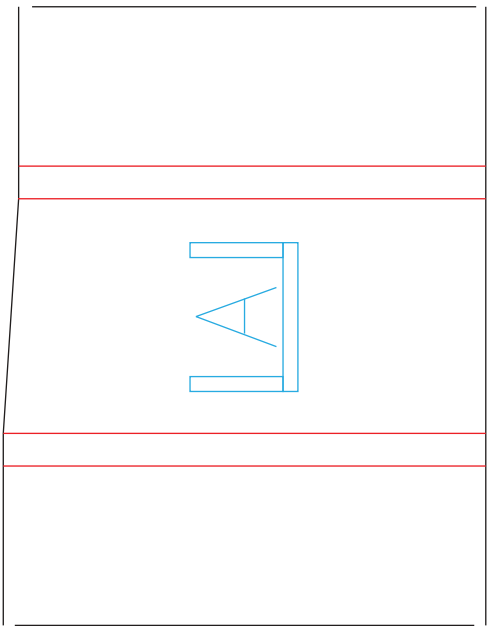
blue = lightly crease

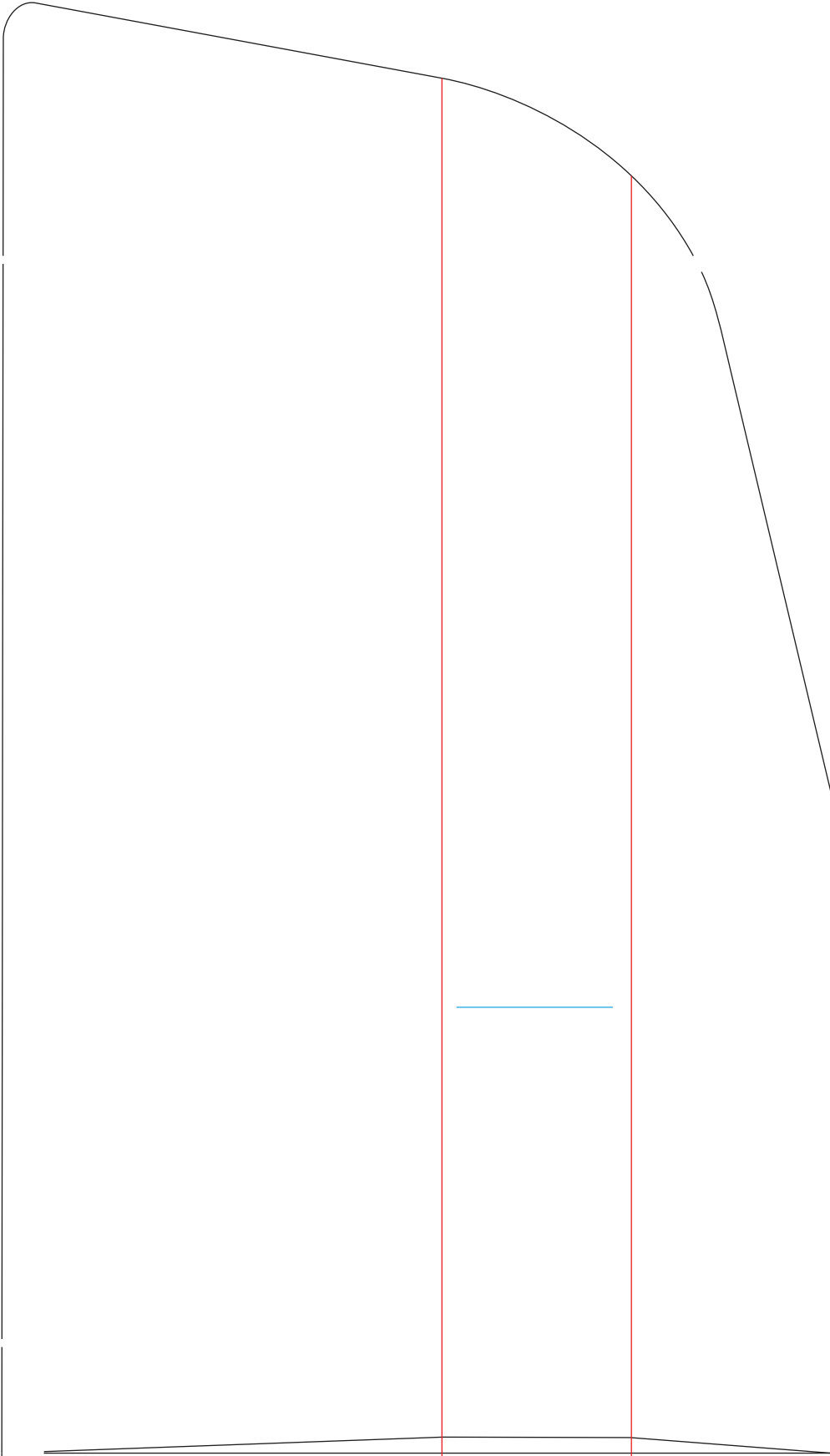
### Tiled plans dimensions:

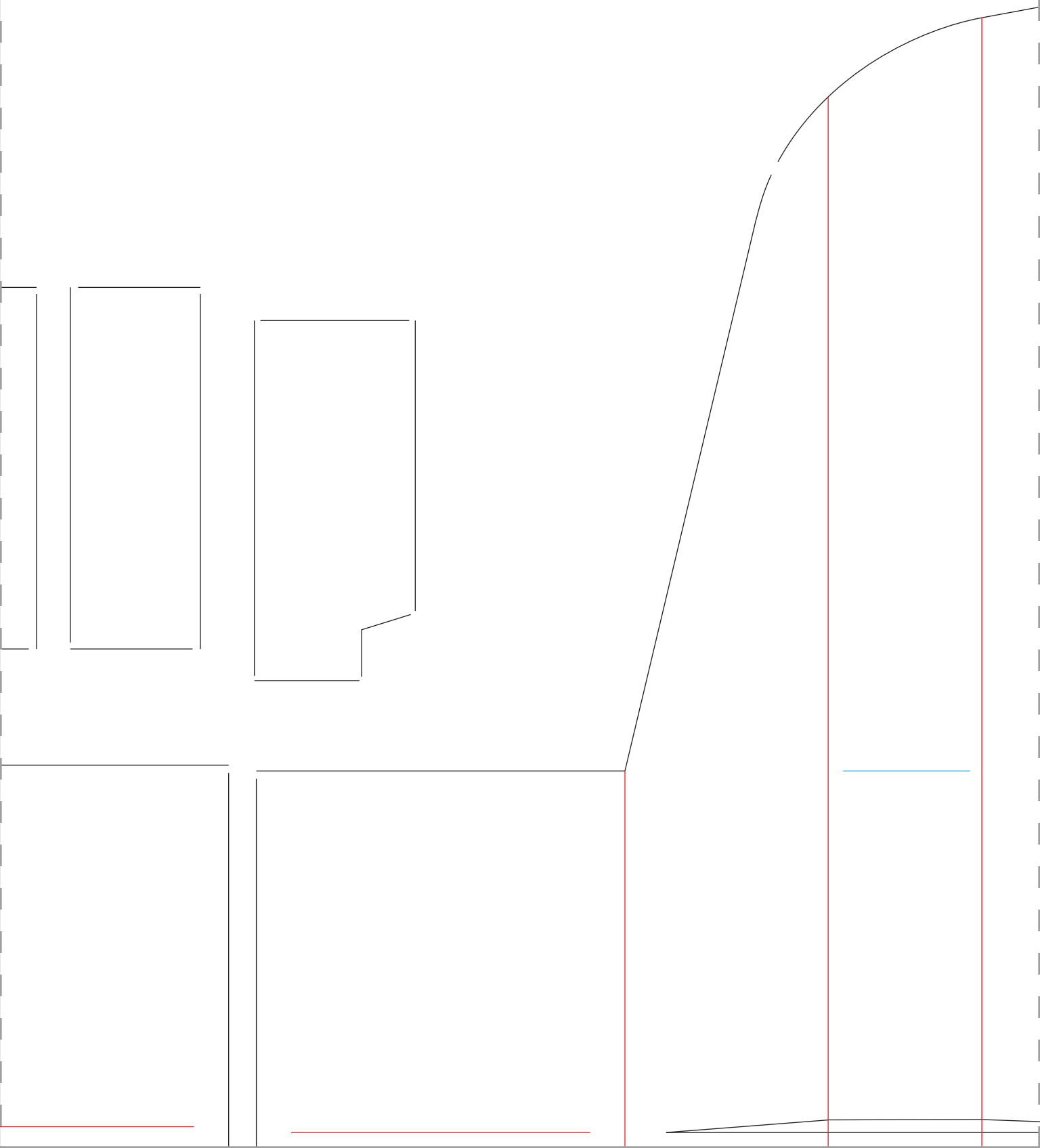
1	2	3	4	5	6	7	8
9	10	11	12	13	14	15	16
17	18	19					



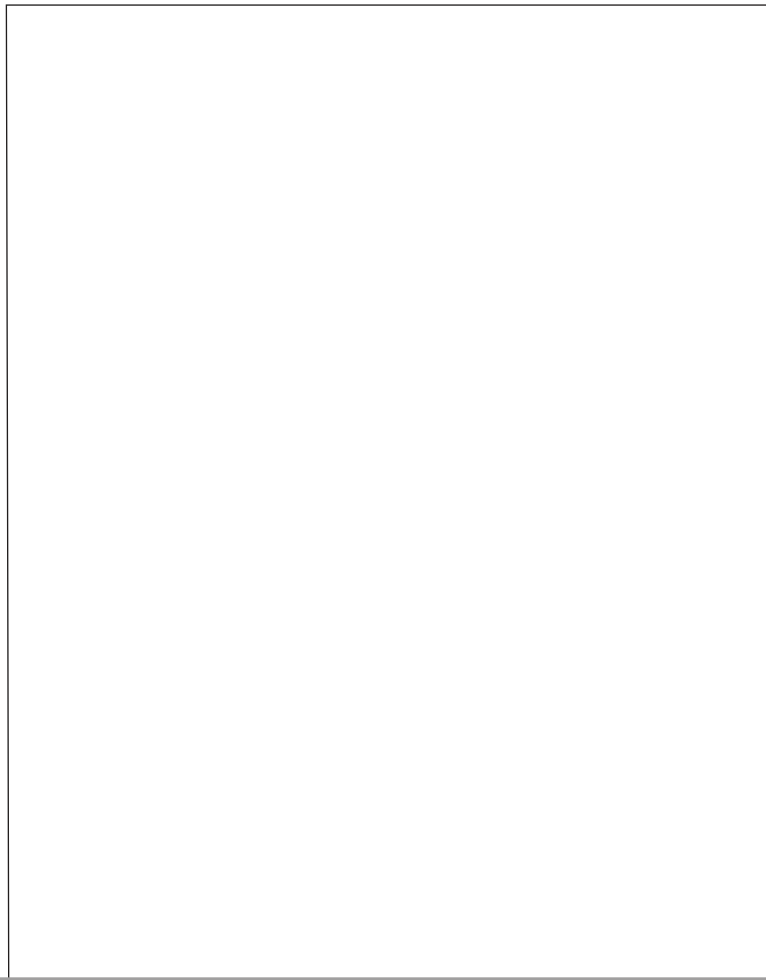
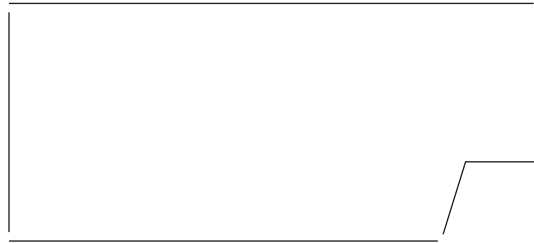
Design By: Josh Bixler

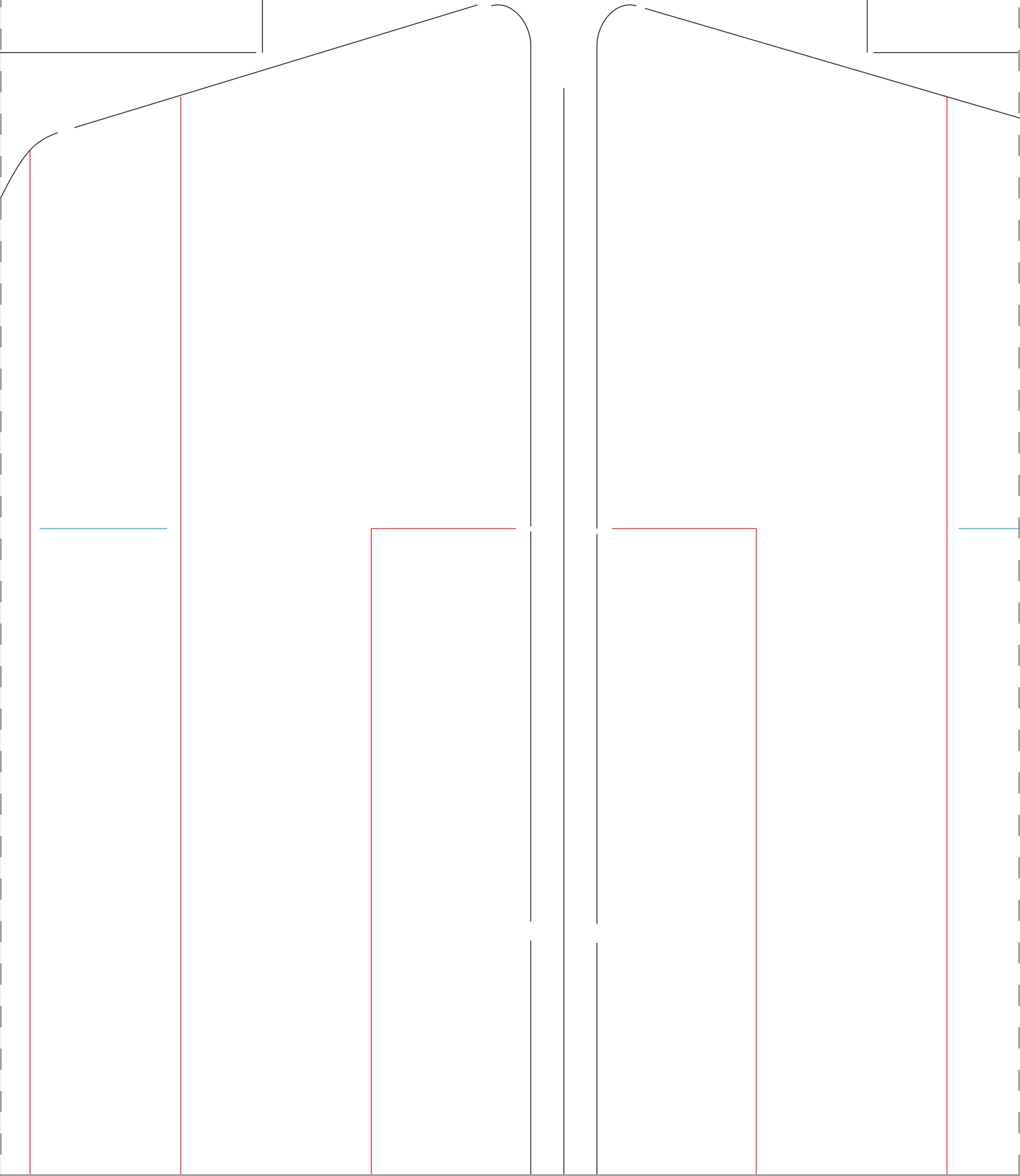
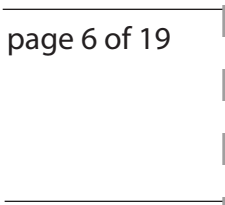
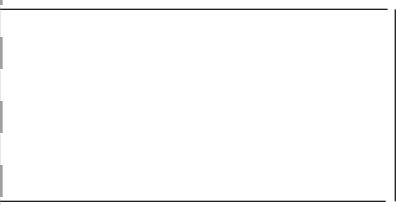


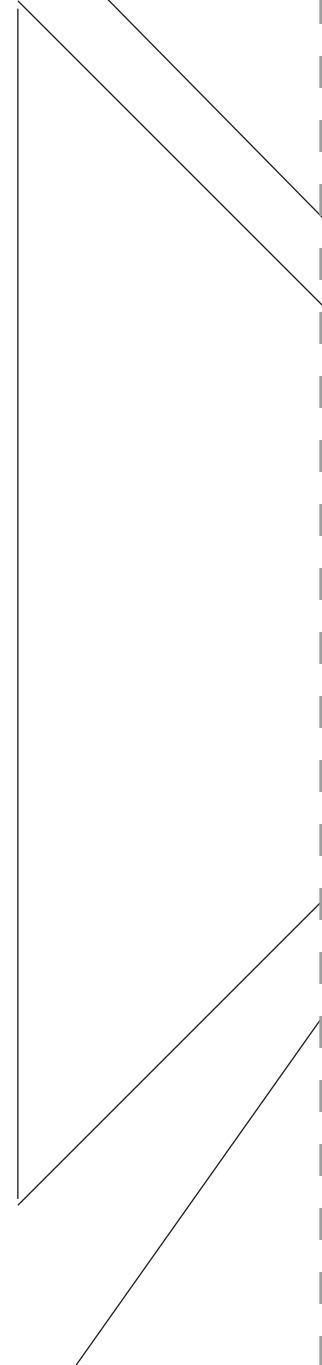
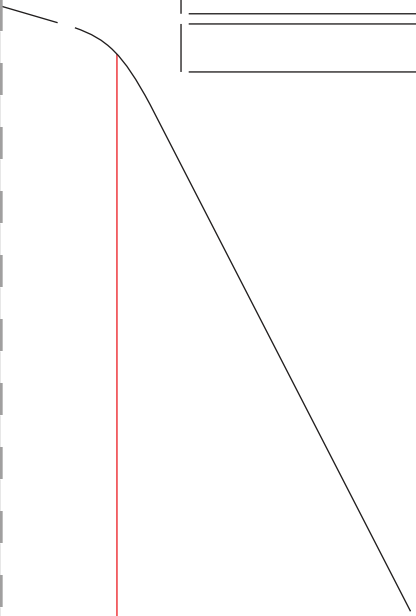
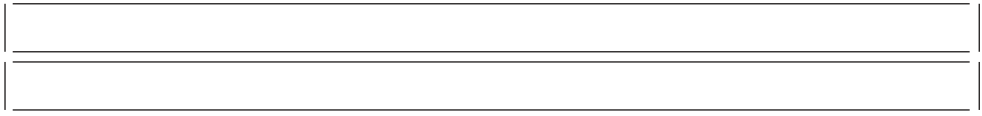
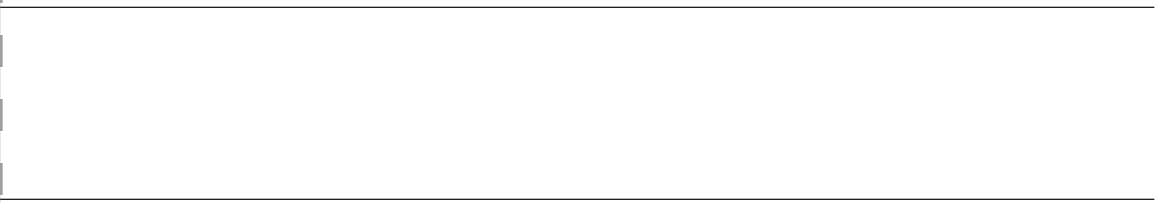


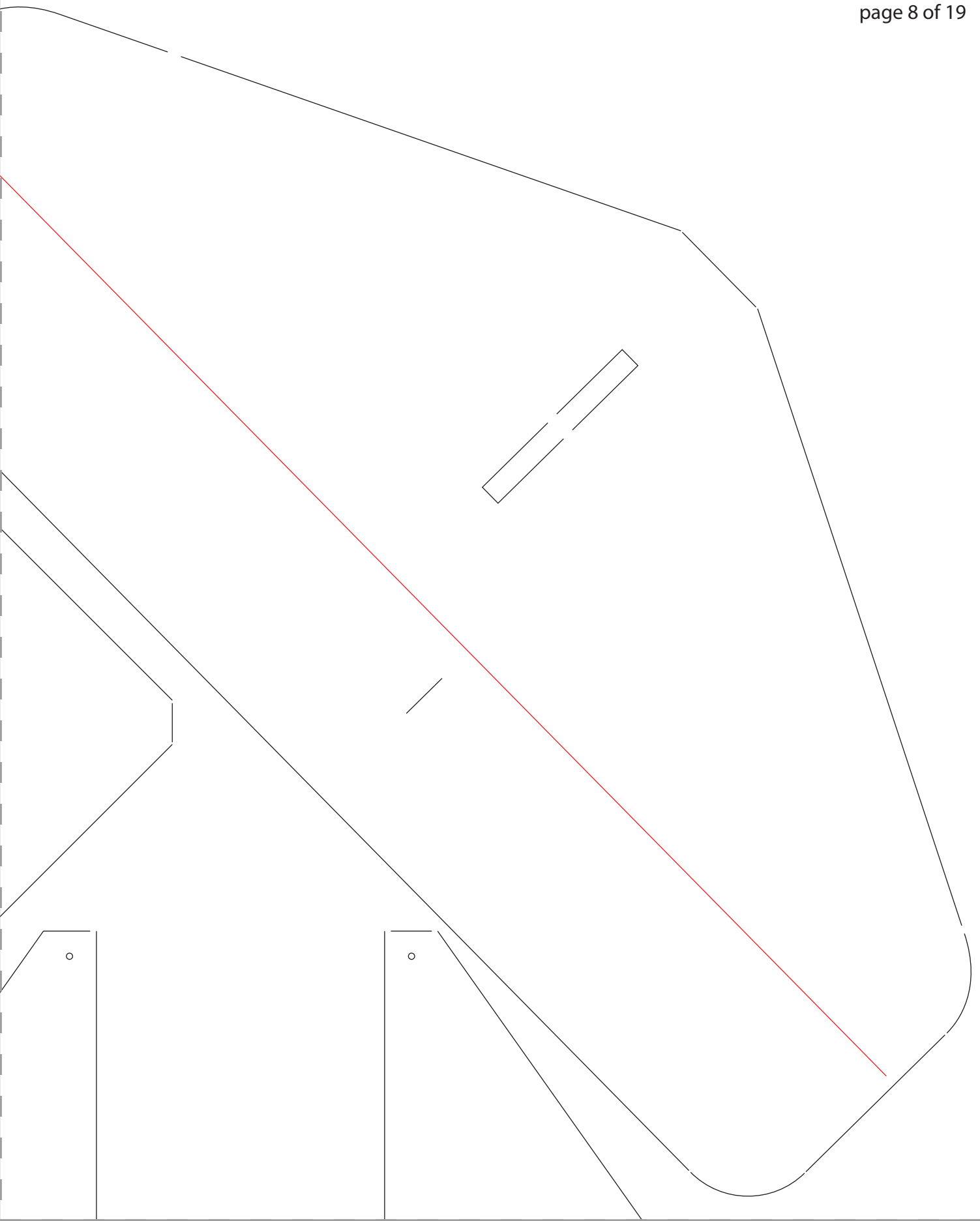


--

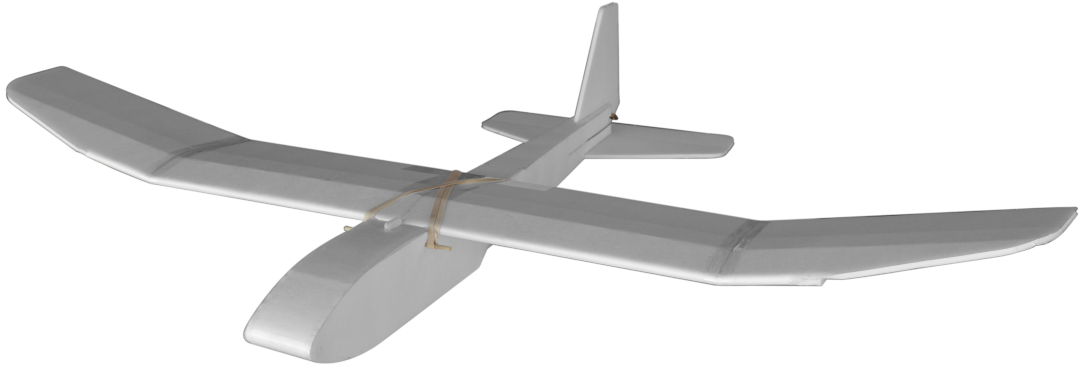



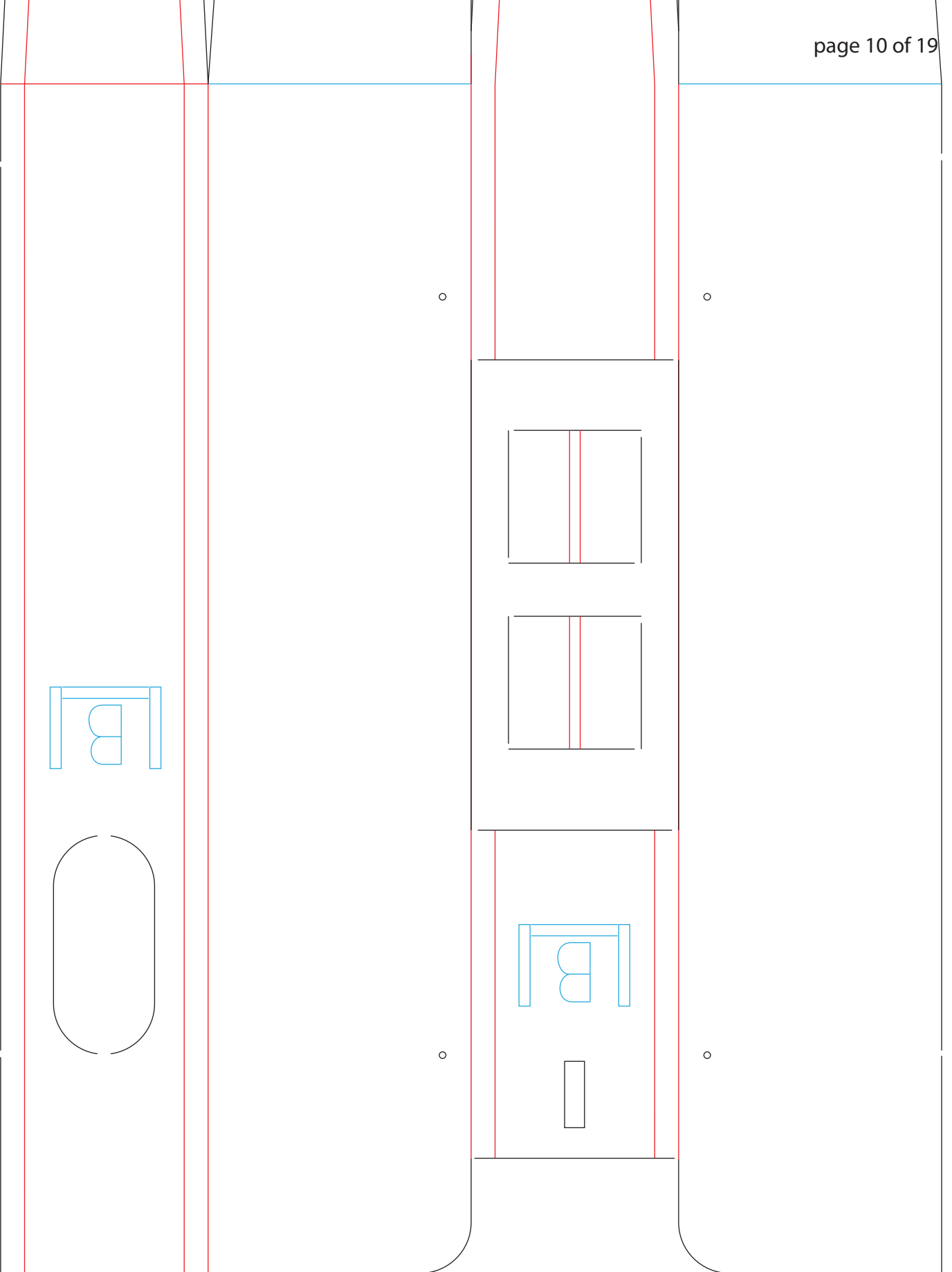


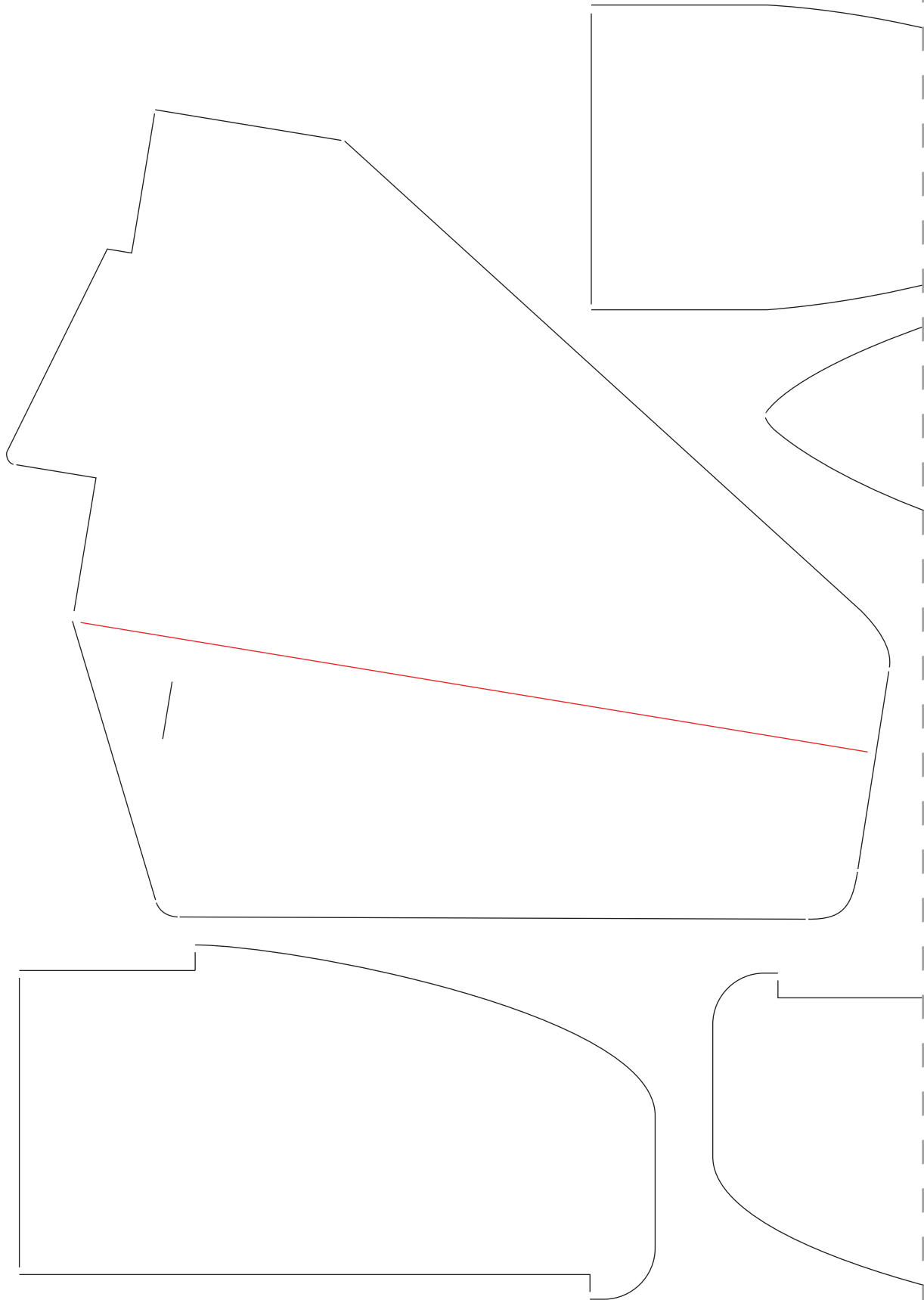






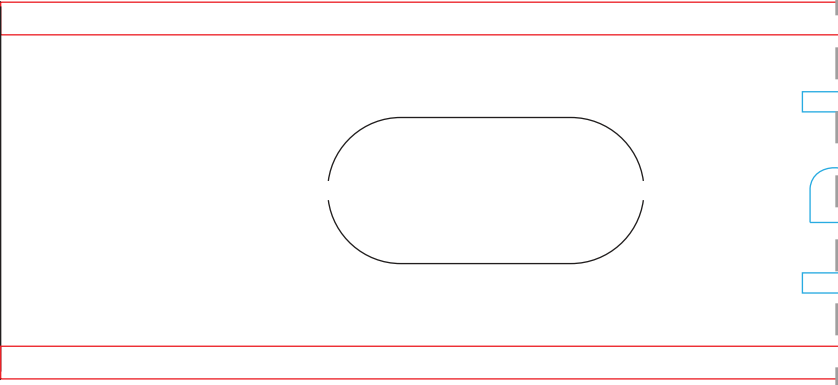
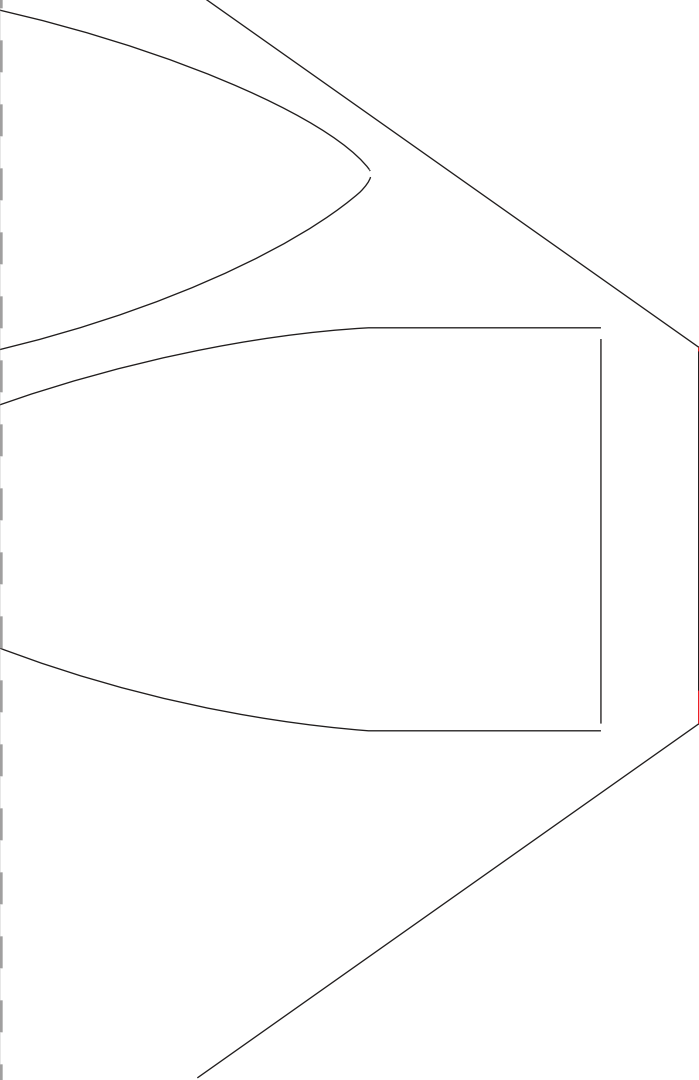






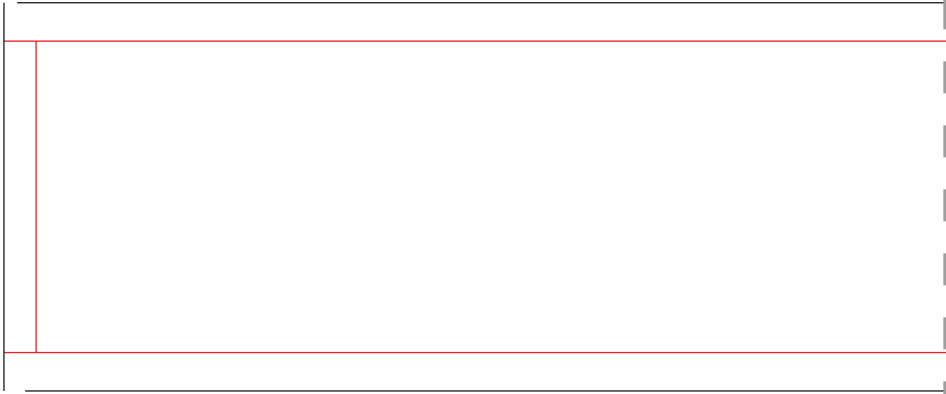
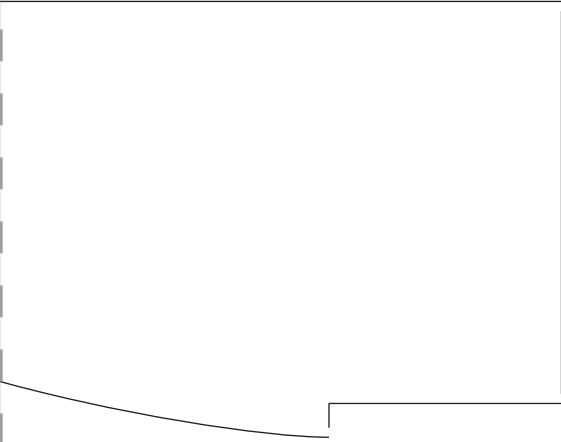
o

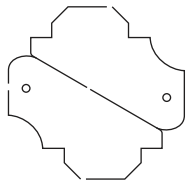
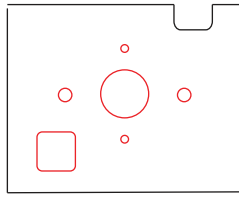
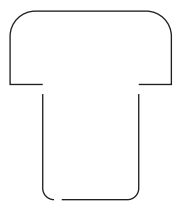
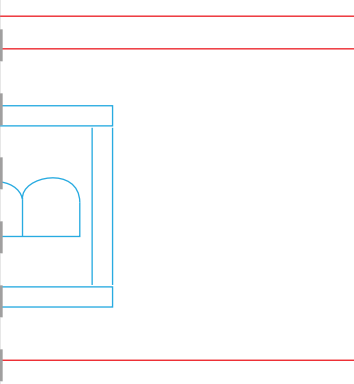
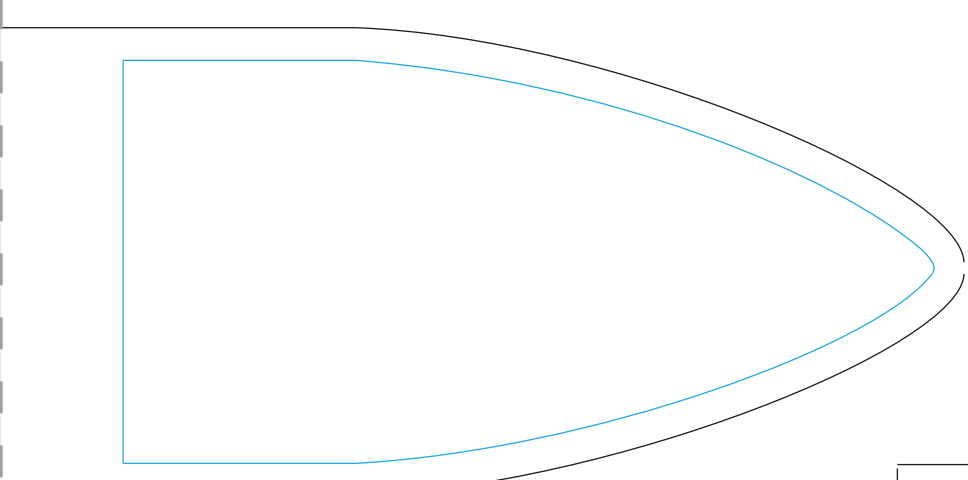
o



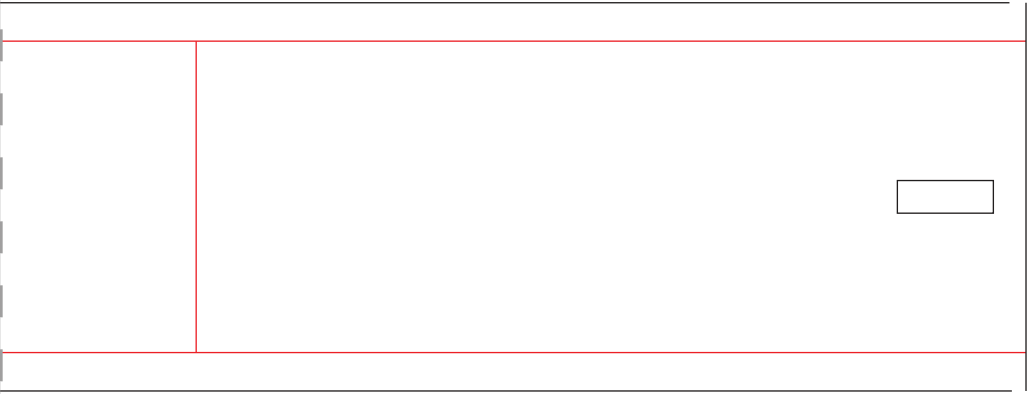
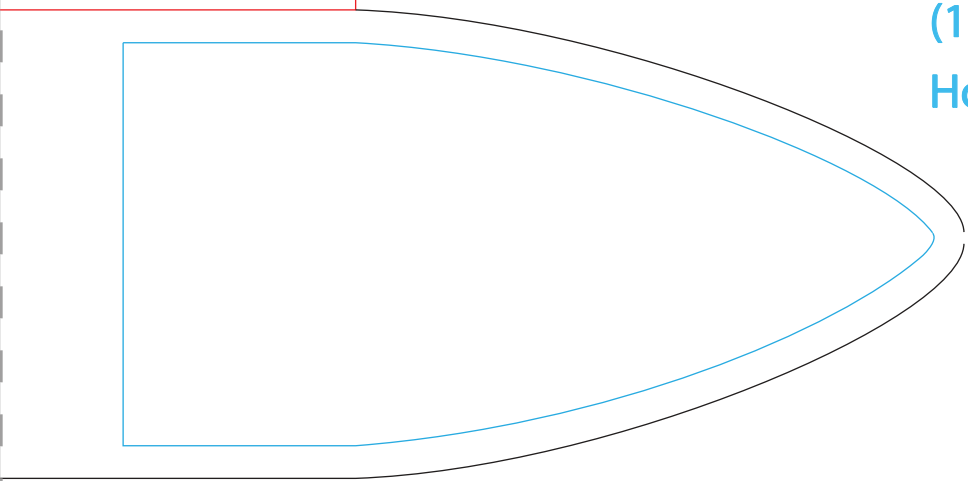
o

o





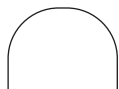
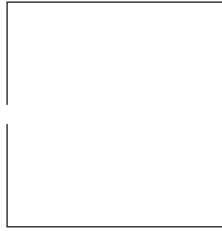
**Firewall/Control horns**  
**1/16" Inch thick**  
**(1.5mm)**  
**Hobby Plywood**





○

○





\_\_\_\_\_

\_\_\_\_\_

\_\_\_\_\_

\_\_\_\_\_

\_\_\_\_\_

\_\_\_\_\_

\_\_\_\_\_

